

The Florida 511 Mobile App

- » Drive mode.
- » Multiple routes provided for each destination.
- » Turn-by-turn directions.
- » Travel times.
- » Real-time traffic information including crashes, congestion, construction and closures.
- » Optional feature to see truck parking locations on the map and the availability of spaces at that location.

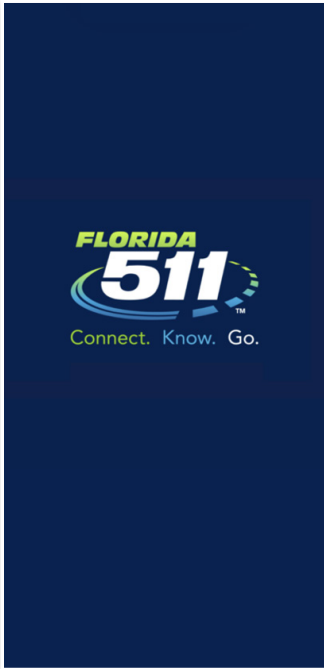
What features have been added?

- » **Safety First Disclaimer** Acknowledgment appears to remind users to not use a handheld device while driving.
- » Clicking “Menu” (three bars, top left) allows the user to link to the **FL511 website** and open the **statewide Twitter account**.
- » The upgraded features provide the ability to see incidents/closures/events, etc., as well as display the **congestion (red/yellow/green) layers**. It also provides the user the option to select which layers they would like to see.
- » Users will also be able to see the **Floodgates** that are entered into the FL511 website, and if logged in, users can import their favorite/saved routes from the FL511 website.

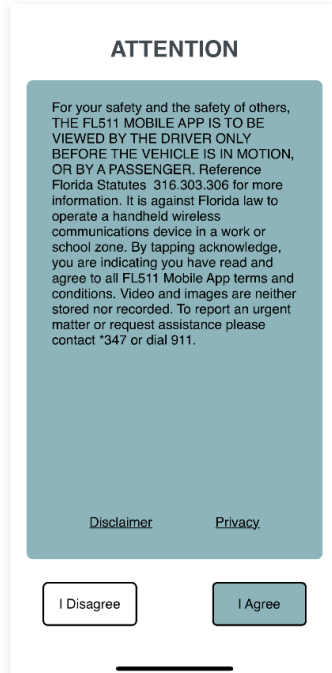


Using the app

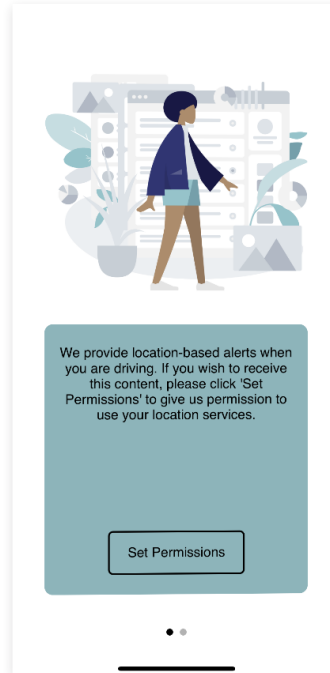
In order to use the FL511 mobile app, users must first agree to the Safety First Disclaimer as a reminder to not use a handheld device while driving.



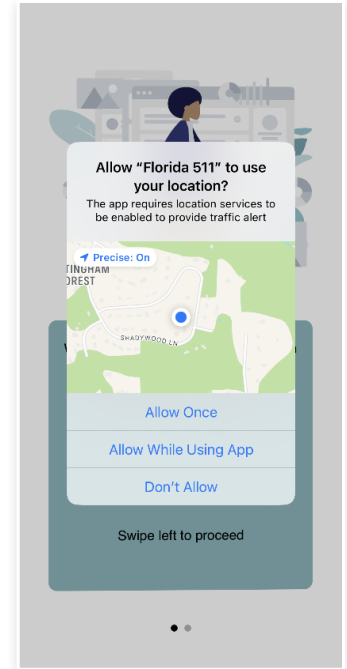
Open the App



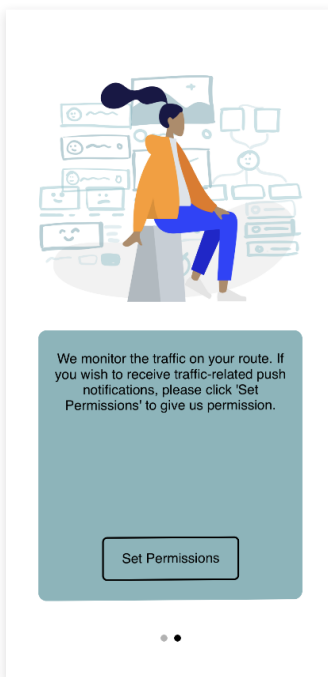
Safety First Disclaimer



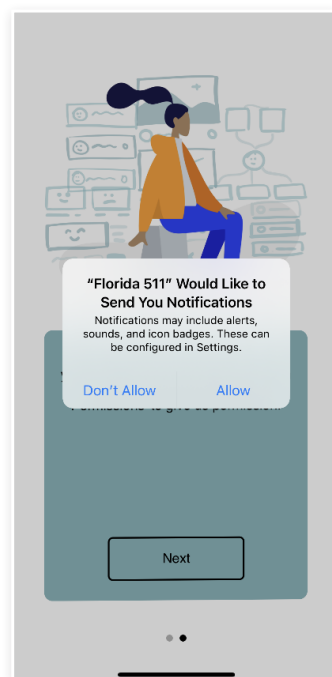
Set permissions for Location-based Alerts



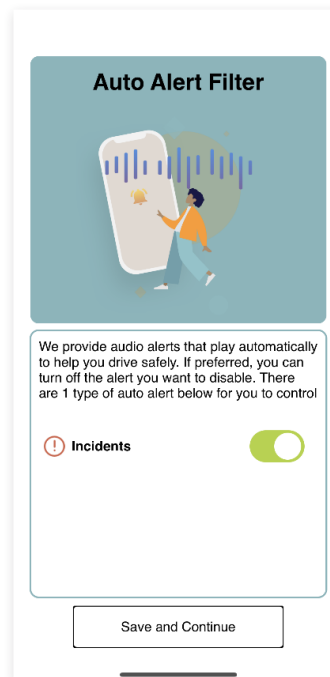
Authorize FL511 to use your Location



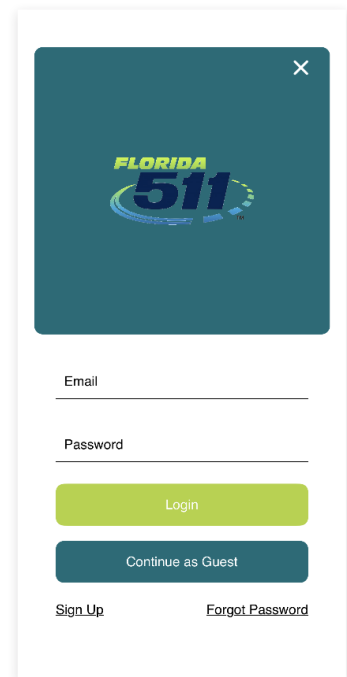
Set permissions for Traffic Monitoring



Authorize FL511 to send you Notifications



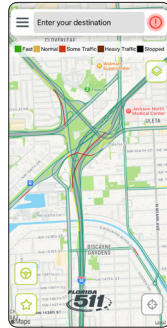
Set up Audio Alerts



Login/Sign up for your FL511 account

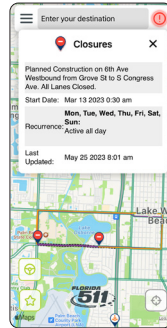
Legend (Navigation Options)

- » Click on the Legend button, on the top right hand corner, to reveal the navigational options.
- » For each feature, slide the button from left to right to activate the required option.
- » Slide the button from right to left to deactivate an option.



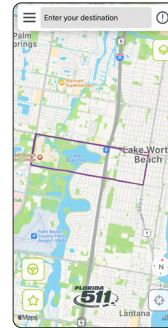
Traffic

- » Shows the level of traffic congestion, by color.



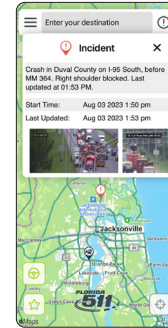
Closures

- » Displays areas that are closed off.



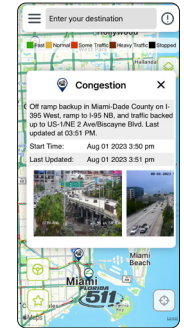
Detour

- » Alternate routes for areas that are closed off.



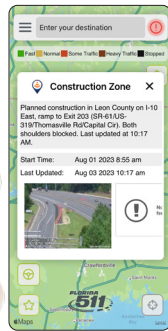
Incidents and Roadwork

- » View incidents that may cause delays.



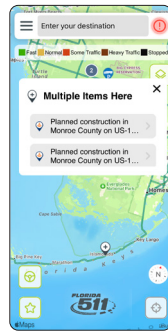
Congestion

- » Check for areas of heavy traffic.



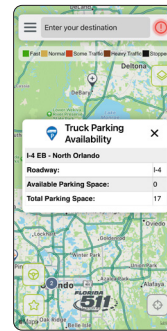
Construction Zones

- » View areas of construction.



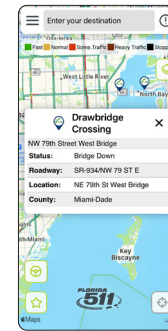
Other Events

- » Displays areas that are closed off.



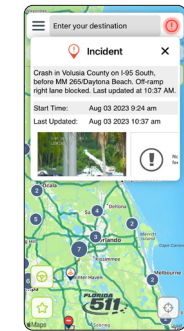
Truck Parking Availability

- » Shows parking spots available for trucks at rest areas.



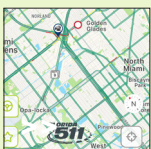
Drawbridge Closing

- » Displays up or down position of drawbridges.



Weather Incident

- » Shows incidents caused by unfavorable weather.



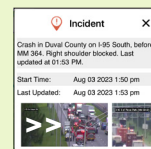
Bullseye

- » Click on the Bullseye at the bottom left to view your current location.



Compass

- » The compass is displayed to show "North" direction when navigating the map.



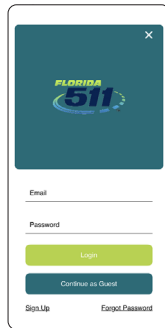
Multiple pop-up window images

- » When available swipe left to right to view multiple images in the pop-up windows.

Menu Options

The Menu provides the ability to customize your Settings.

This upgraded version also allows the user to link to the **FL511 website** and open the **statewide Twitter account**.



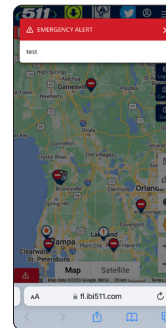
Login/Logout

» Login, logout, sign up or continue as guest.



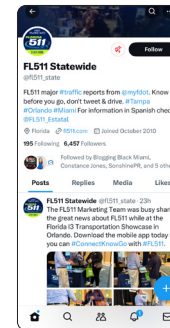
Drive Mode

» Features included to assist while driving.



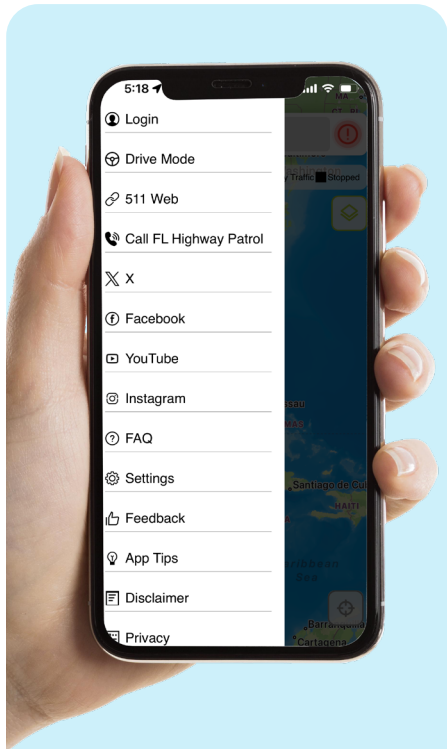
511 Web

» Access the **FL511.com** web page.



Twitter

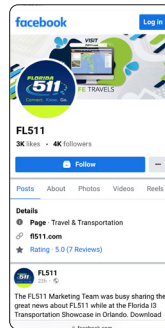
» View the (@**fl511_state**) "X" (Twitter) account.



» To access your Menu, select the white icon with the three horizontal bars on the upper left-hand corner.

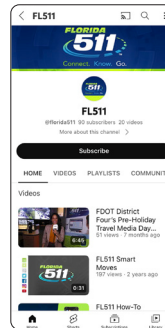
» The map slides to the right and reveals a new window with the menu options.

» To exit your Menu, select the white icon with the three horizontal bars on the upper right-hand corner.



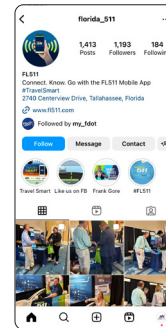
Facebook

» View the (@**FL511**) Facebook page.



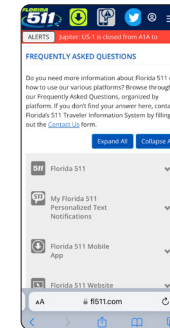
YouTube

» Play videos from the (@**Florida511**) YouTube channel.



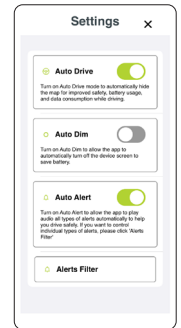
Instagram

» Browse the @**Florida_511** Instagram page.



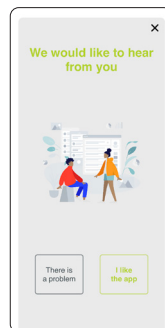
FAQ

» Frequently Asked Questions about FL511.



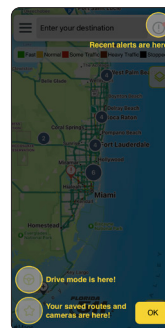
Settings

» Adjust your app settings.



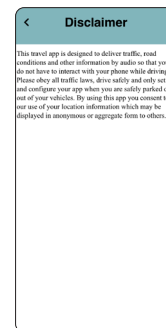
Feedback

» Send feedback via email.



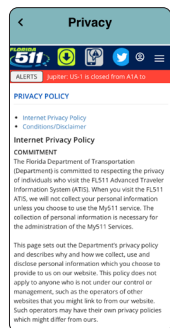
App Tips

» Hints on how to use the app.



Disclaimer

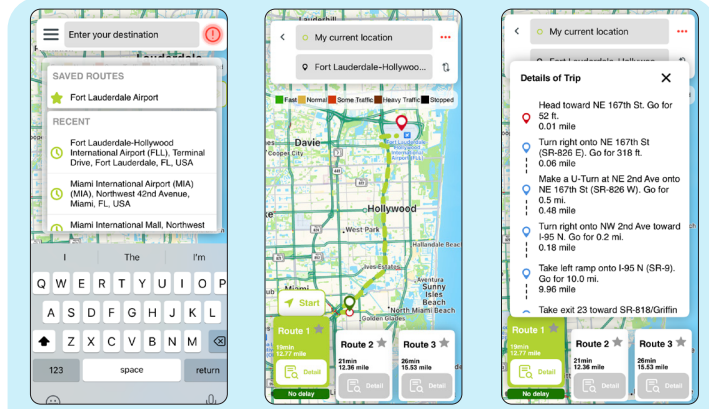
» Show the Disclaimer.



Privacy

» View the privacy policy.

Saved Destinations



Saved or Recent Routes

- » Start typing and the app prompts “Saved” or “Recent” routes for easy access.

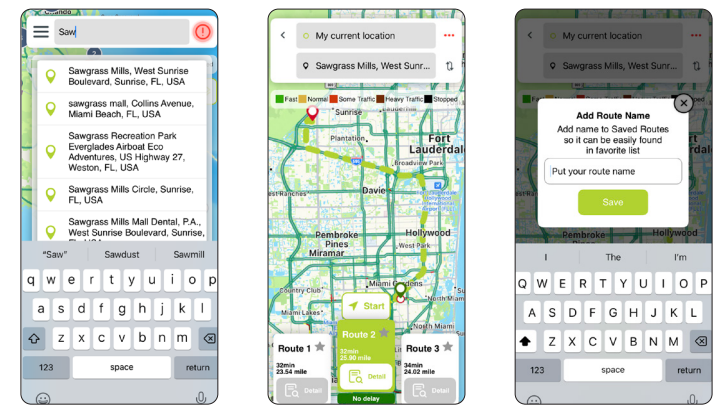
View three Proposed Routes

- » Three possible routes are presented.
- » Times and distances are also shown.

Details of Trip

- » Click on “Detail” for step-by-step directions to your destination.

New Destinations



Enter New Destination

- » Enter the destination in the top bar.
- » The app prompts a list when typed.

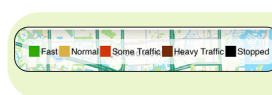
Review New Route

- » Three routes are displayed along with times and distances.

Save New Route

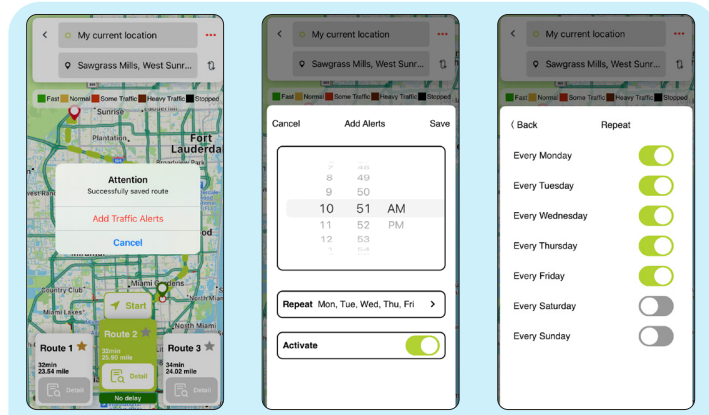
- » Click on the star next to the Route # to add and save the route.

Traffic Congestion Colors



- » The color of the route indicates the congestion level of traffic.

Add Traffic Alerts



Add Traffic Alerts

- » Add Traffic Alerts to your route.

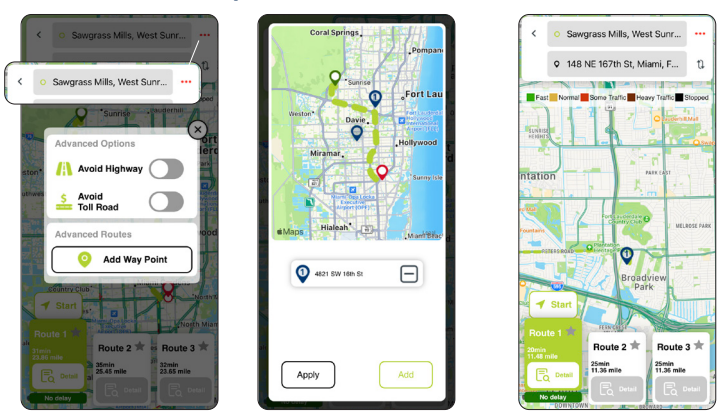
Add Alert Times

- » Schedule the time to send alerts.

Select Alert Days

- » Select the days to send alerts.

Advanced Options



Avoid Highway/Avoid Toll Road

- » Click on the three dots at the top right to select additional options.

Advanced Routes/Add Way Point

- » Tap an area to add a way point.
- » Hit apply or add another.

Reverse

- » Select the double arrows to reverse the directions.



New Alerts

Unread Alerts