

The Florida 511 Mobile App

- » Drive mode.
- » Multiple routes provided for each destination.
- » Turn-by-turn directions.
- » Travel times.
- » Real-time traffic information including crashes, congestion, construction and closures.
- » Optional feature to see truck parking locations on the map and the availability of spaces at that location.

What features have been added?

- » **Safety First Disclaimer** Acknowledgment appears to remind users to not use a handheld device while driving.
- » Clicking "Menu" (three bars, top left) allows the user to link to the **FL511 website** and open the **statewide "X" (Twitter) account**.
- » The upgraded features provide the ability to see incidents/closures/events, etc., as well as display the **congestion (red/yellow/green) layers**. It also provides the user the option to select which layers they would like to see.
- » Users will also be able to see the **Floodgates** that are entered into the FL511 website, and if logged in, users can import their favorite/saved routes from the FL511 website.



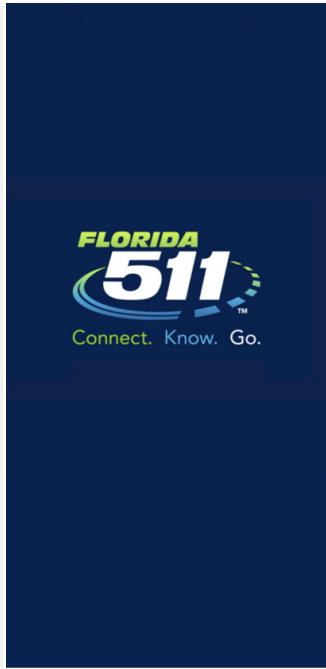
MOBILE APP FL511.COM ALERTS

#FL511 @FL511 @Florida\_511 @FL511

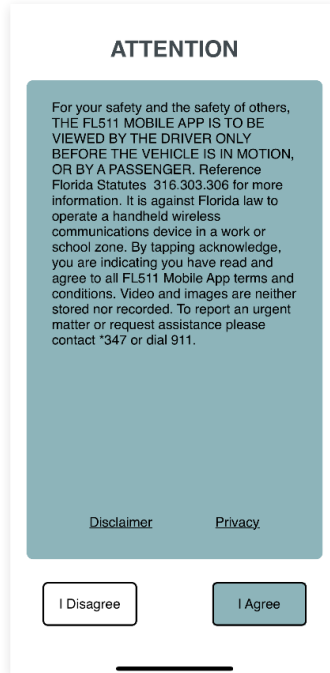
Download on the App Store GET IT ON Google Play

### Using the app

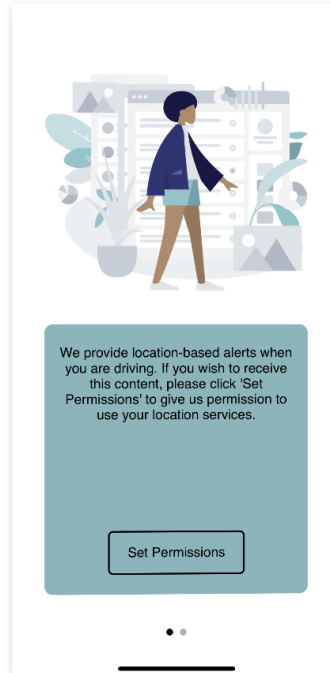
In order to use the FL511 mobile app, users must first agree to the Safety First Disclaimer as a reminder to not use a handheld device while driving.



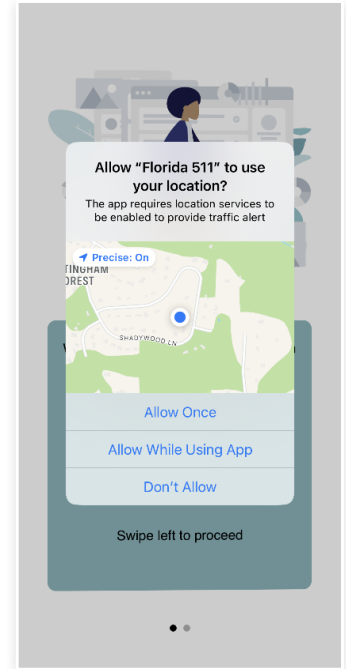
Open the App



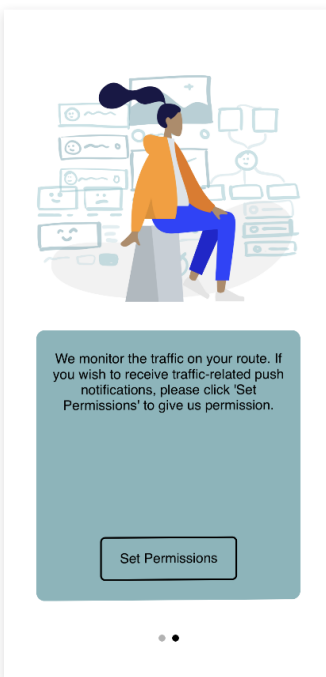
Safety First Disclaimer



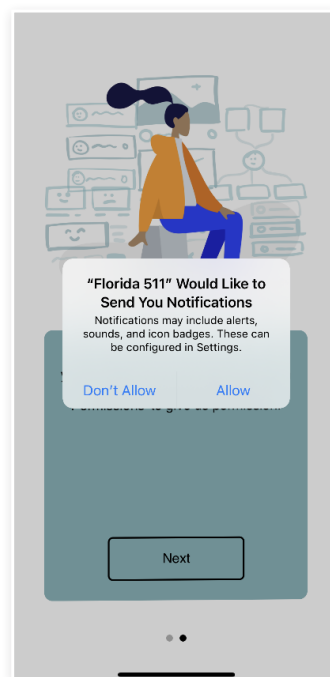
Set permissions for Location-based Alerts



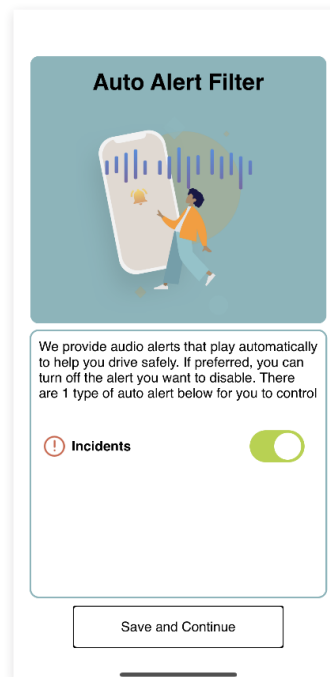
Authorize FL511 to use your Location



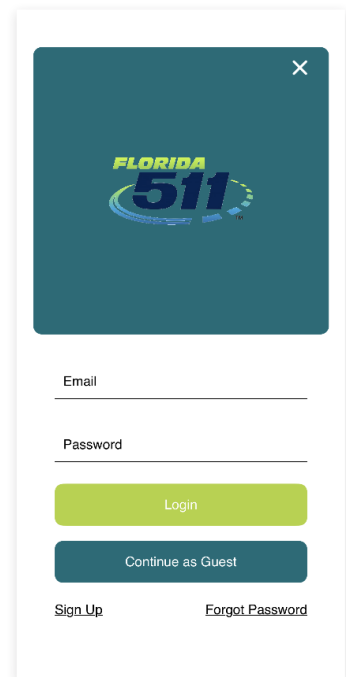
Set permissions for Traffic Monitoring



Authorize FL511 to send you Notifications

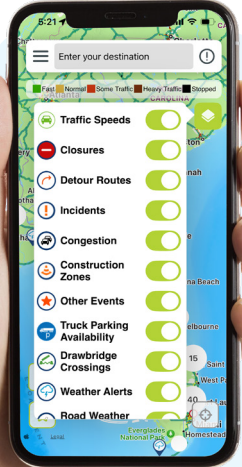


Set up Audio Alerts



Login/Sign up for your FL511 account

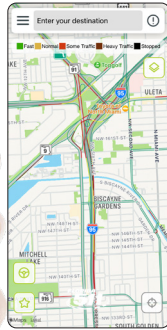
**Legend (Navigation Options)**



» Click on the Legend button, on the top right hand corner, to reveal the navigational options.

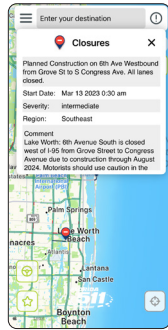
» For each feature, slide the button from left to right to activate the required option.

» Slide the button from right to left to deactivate an option.



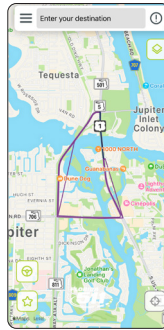
**Traffic Speeds**

» Shows the level of traffic congestion, by color.



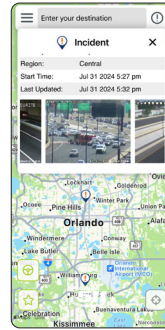
**Closures**

» Displays areas that are closed off.



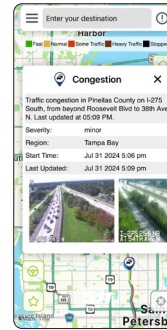
**Detour Routes**

» Alternate routes for areas that are closed off.



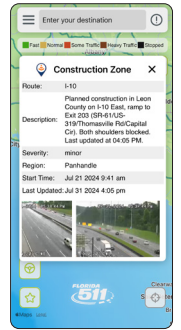
**Incidents**

» View incidents that may cause delays.



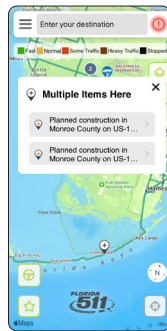
**Congestion**

» Check for areas of heavy traffic.



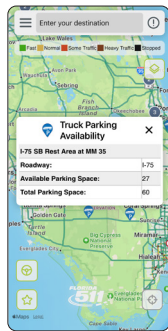
**Construction Zone**

» View areas of construction.



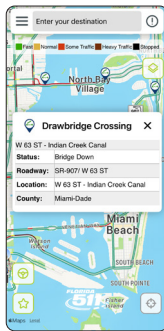
**Other Events**

» Displays areas that are closed off.



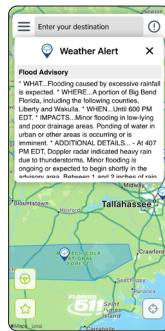
**Truck Parking Availability**

» Shows parking spots available for trucks at rest areas.



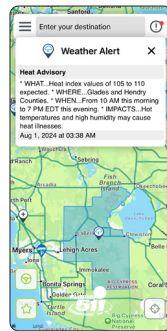
**Drawbridge Closing**

» Displays up or down position of drawbridges.



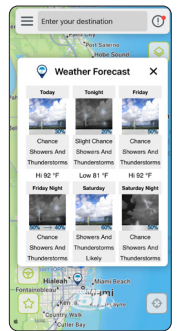
**Weather Alert**

» Shows incidents caused by unfavorable weather.



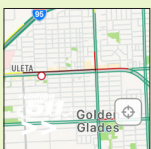
**Road Weather Alert**

» Displays road conditions caused by unfavorable weather.



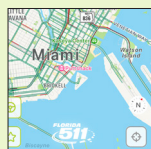
**Weather Forecast**

» Shows weather conditions in that area.



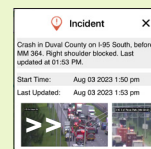
**Bullseye**

» Click on the Bullseye at the bottom left to view your current location.



**Compass**

» The compass is displayed to show "North" direction when navigating the map.



**Multiple pop-up window images**

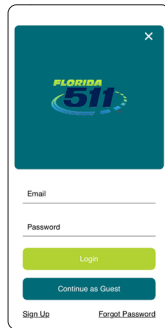
» When available swipe left to right to view multiple images in the pop-up windows.



**Menu Options**

The Menu provides the ability to customize your Settings.

This upgraded version also allows the user to link to the **FL511 website** and open the **statewide "X"** (Twitter) account.



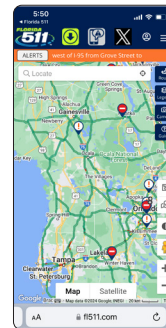
**Login/Logout**

» Login, logout, sign up or continue as guest.



**Drive Mode**

» Features included to assist while driving.



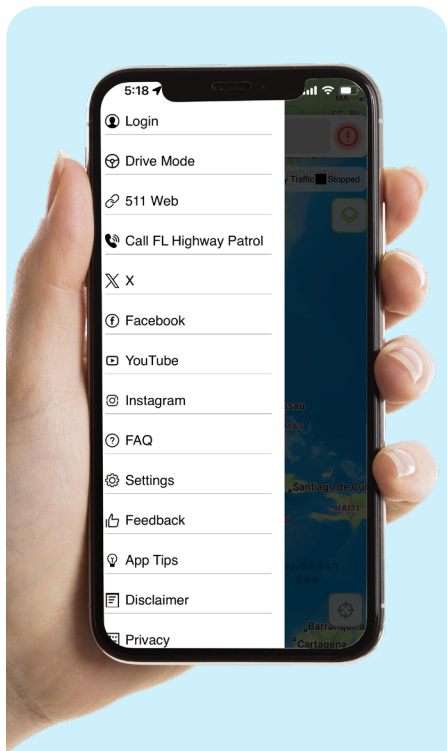
**511 Web**

» Access the FL511.com web page.



**X (Twitter)**

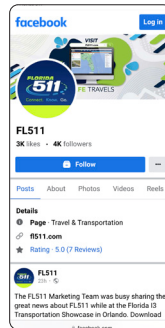
» View the (@fl511\_state) "X" (Twitter) account.



» To access your Menu, select the white icon with the three horizontal bars on the upper left-hand corner.

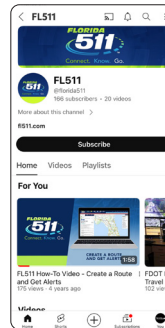
» The map slides to the right and reveals a new window with the menu options.

» To exit your Menu, select the white icon with the three horizontal bars on the upper right-hand corner.



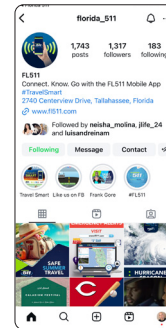
**Facebook**

» View the (@FL511) Facebook page.



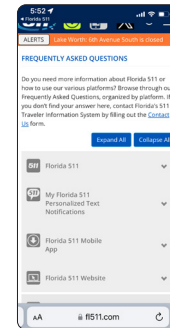
**YouTube**

» Play videos from the (@Florida511) YouTube channel.



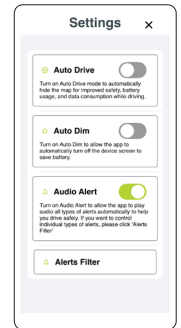
**Instagram**

» Browse the @Florida\_511 Instagram page.



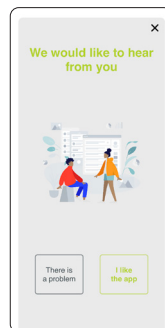
**FAQ**

» Frequently Asked Questions about FL511.



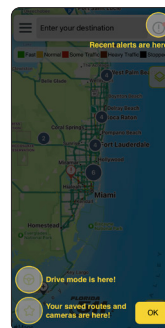
**Settings**

» Adjust your app settings.



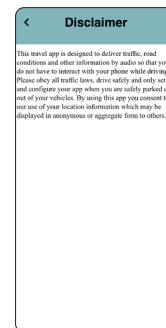
**Feedback**

» Send feedback via email.



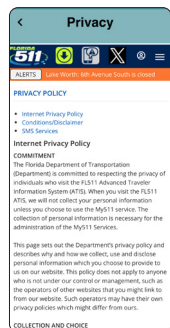
**App Tips**

» Hints on how to use the app.



**Disclaimer**

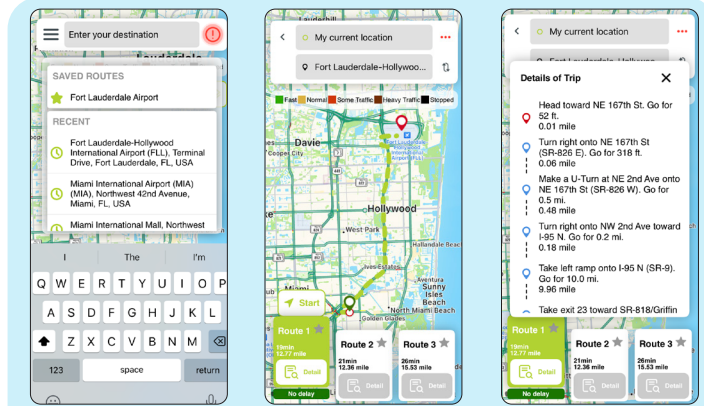
» Show the Disclaimer.



**Privacy**

» View the privacy policy.

**Saved Destinations**



**Saved or Recent Routes**

» Start typing and the app prompts “Saved” or “Recent” routes for easy access.

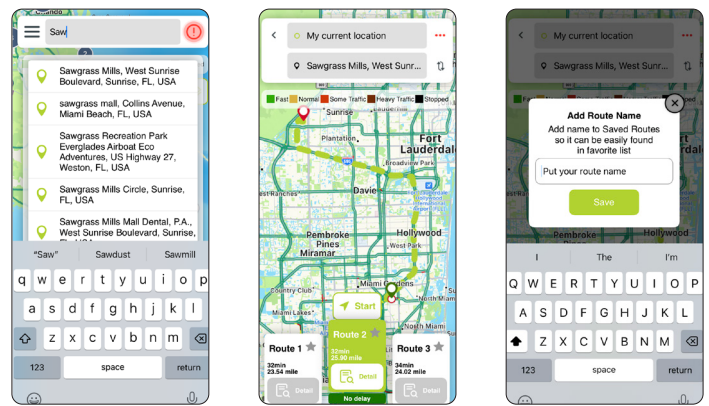
**View three Proposed Routes**

» Three possible routes are presented.  
» Times and distances are also shown.

**Details of Trip**

» Click on “Detail” for step-by-step directions to your destination.

**New Destinations**



**Enter New Destination**

» Enter the destination in the top bar.  
» The app prompts a list when typed.

**Review New Route**

» Three routes are displayed along with times and distances.

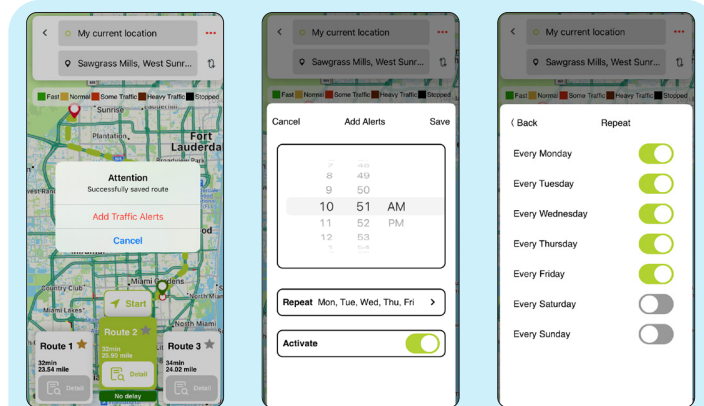
**Save New Route**

» Click on the star next to the Route # to add and save the route.

**Traffic Congestion Colors**

» The color of the route indicates the congestion level of traffic.

**Add Traffic Alerts**



**Add Traffic Alerts**

» Add Traffic Alerts to your route.

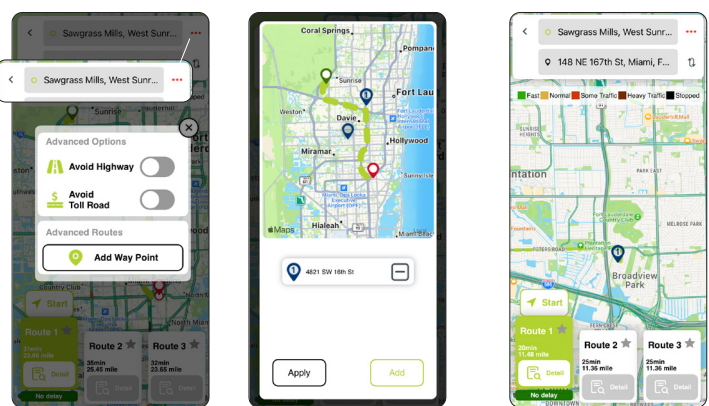
**Add Alert Times**

» Schedule the time to send alerts.

**Select Alert Days**

» Select the days to send alerts.

**Advanced Options**



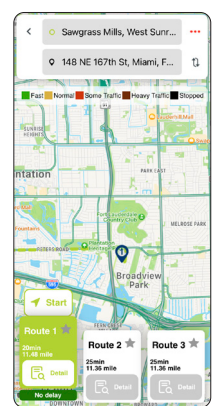
**Avoid Highway/Avoid Toll Road**

» Click on the three dots at the top right to select additional options.

**Advanced Routes/Add Way Point**

» Tap an area to add a way point.  
» Hit apply or add another.

**Reverse**



**Reverse direction**

» Select the double arrows to reverse the directions.

