

The Florida 511 Mobile App

- » Drive mode.
- » Multiple routes provided for each destination.
- » Turn-by-turn directions.
- » Travel times.
- » Real-time traffic information including crashes, congestion, construction and closures.
- » Optional feature to see truck parking locations on the map and the availability of spaces at that location.

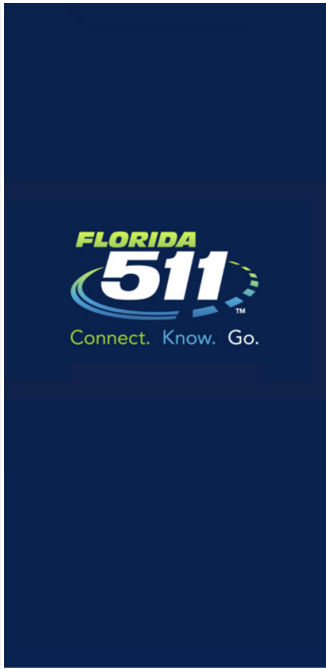
What features have been added?

- » **Safety First Disclaimer** Acknowledgment appears to remind users to not use a handheld device while driving.
- » Clicking "Menu" (three bars, top left) allows the user to link to the **FL511 website** and open the **statewide "X" (Twitter) account**.
- » The upgraded features provide the ability to see incidents/closures/events, etc., as well as display the **congestion (red/yellow/green) layers**. It also provides the user the option to select which layers they would like to see.
- » Users will also be able to see the **Floodgates** that are entered into the FL511 website, and if logged in, users can import their favorite/saved routes from the FL511 website.

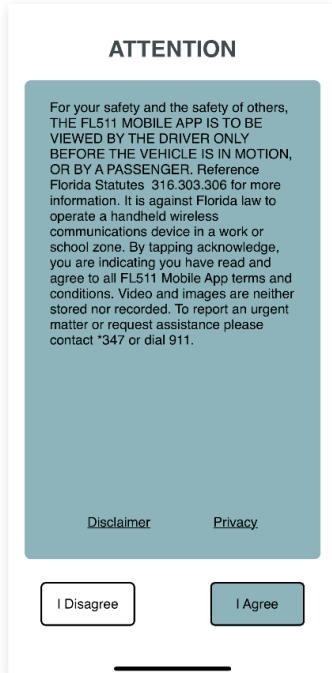


Using the app

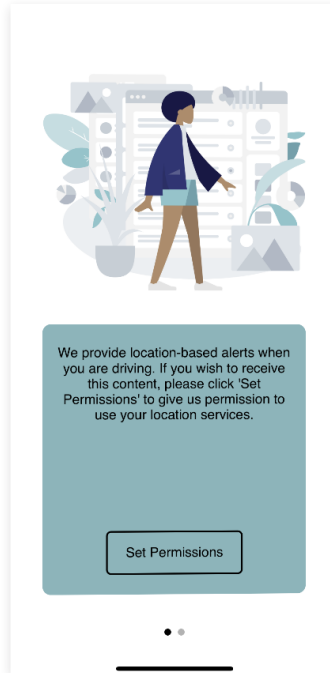
In order to use the FL511 mobile app, users must first agree to the Safety First Disclaimer as a reminder to not use a handheld device while driving.



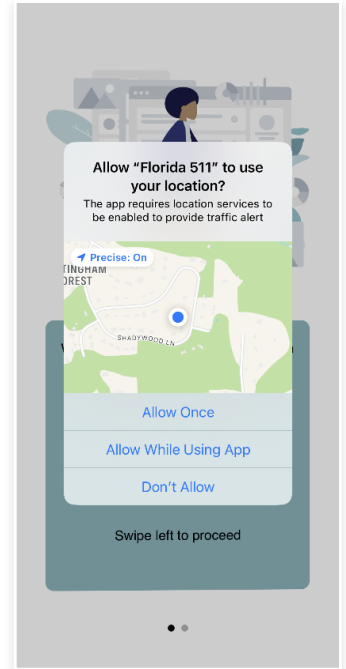
Open the App



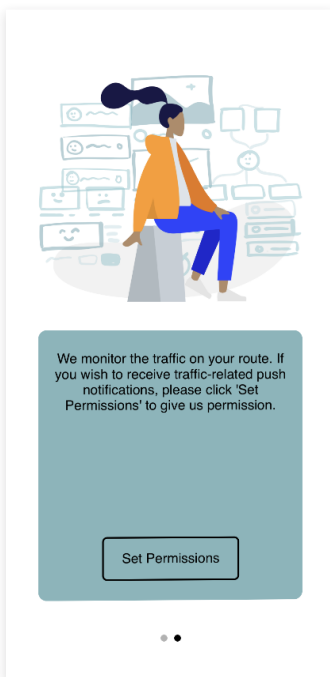
Safety First Disclaimer



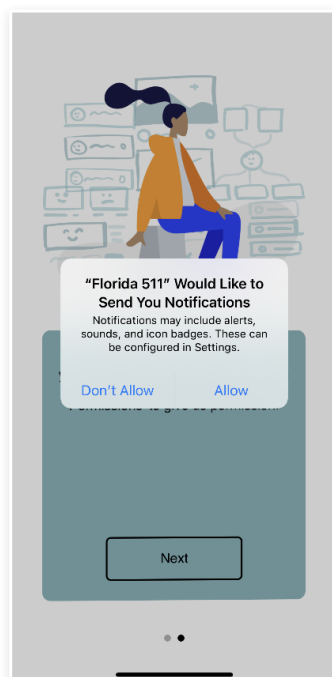
Set permissions for Location-based Alerts



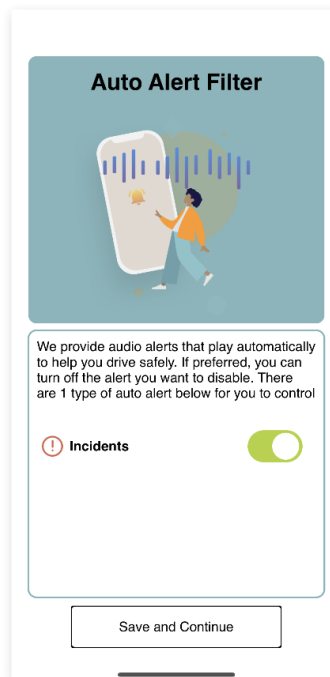
Authorize FL511 to use your Location



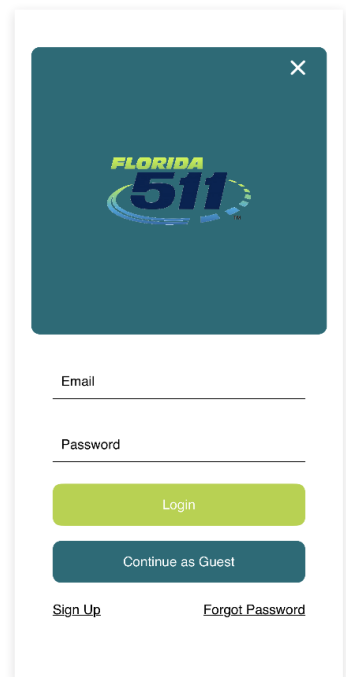
Set permissions for Traffic Monitoring



Authorize FL511 to send you Notifications

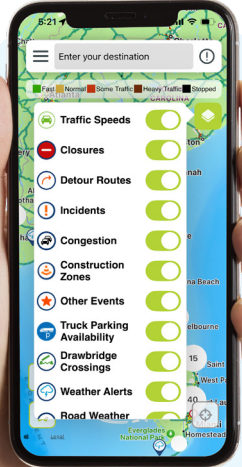


Set up Audio Alerts



Login/Sign up for your FL511 account

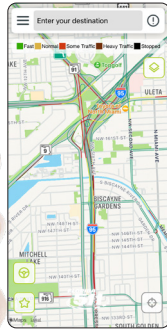
Legend (Navigation Options)



» Click on the Legend button, on the top right hand corner, to reveal the navigational options.

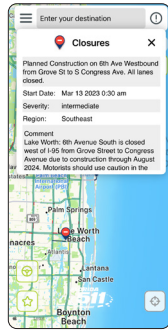
» For each feature, slide the button from left to right to activate the required option.

» Slide the button from right to left to deactivate an option.



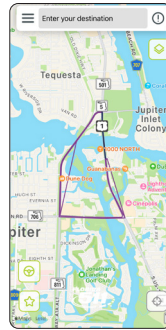
Traffic Speeds

» Shows the level of traffic congestion, by color.



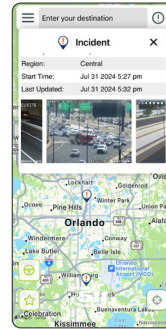
Closures

» Displays areas that are closed off.



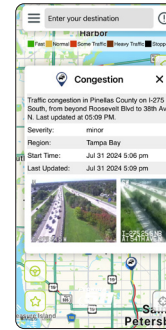
Detour Routes

» Alternate routes for areas that are closed off.



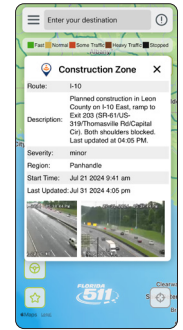
Incidents

» View incidents that may cause delays.



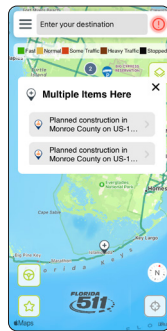
Congestion

» Check for areas of heavy traffic.



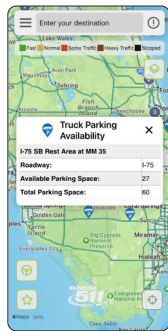
Construction Zone

» View areas of construction.



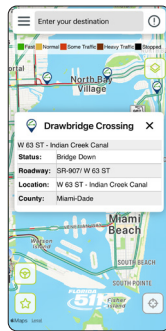
Other Events

» Displays areas that are closed off.



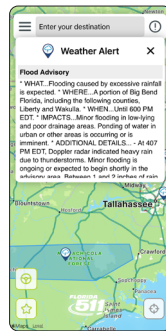
Truck Parking Availability

» Shows parking spots available for trucks at rest areas.



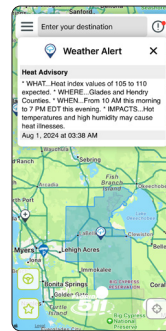
Drawbridge Closing

» Displays up or down position of drawbridges.



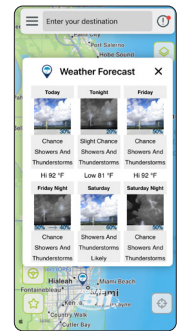
Weather Alert

» Shows incidents caused by unfavorable weather.



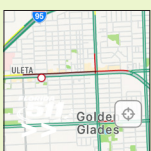
Road Weather Alert

» Displays road conditions caused by unfavorable weather.



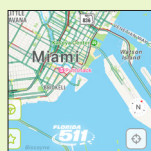
Weather Forecast

» Shows weather conditions in that area.



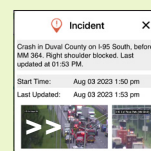
Bullseye

» Click on the Bullseye at the bottom left to view your current location.



Compass

» The compass is displayed to show "North" direction when navigating the map.



Multiple pop-up window images

» When available swipe left to right to view multiple images in the pop-up windows.

Menu Options

The Menu provides the ability to customize your Settings.

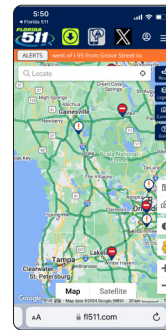
This upgraded version also allows the user to link to the **FL511 website** and open the **statewide "X"** (Twitter) account.



Login/Logout



Drive Mode



511 Web



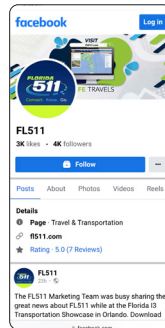
X (Twitter)

» Login, logout, sign up or continue as guest.

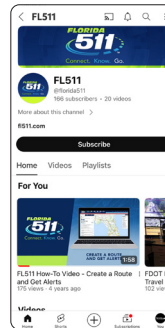
» Features included to assist while driving.

» Access the **FL511.com** web page.

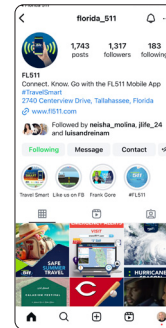
» View the (@**fl511_state**) "X" (Twitter) account.



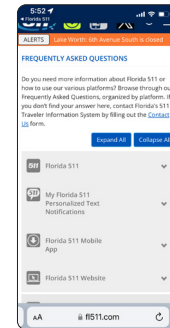
Facebook



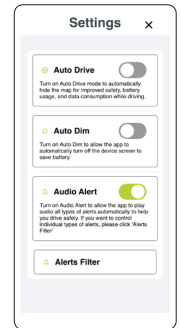
YouTube



Instagram



FAQ



Settings

» View the (@**FL511**) Facebook page.

» Play videos from the (@**Florida511**) YouTube channel.

» Browse the @**Florida_511** Instagram page.

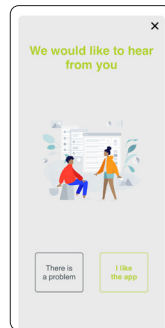
» Frequently Asked Questions about FL511.

» Adjust your app settings.

» To access your Menu, select the white icon with the three horizontal bars on the upper left-hand corner.

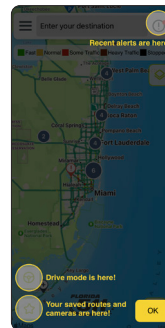
» The map slides to the right and reveals a new window with the menu options.

» To exit your Menu, select the white icon with the three horizontal bars on the upper right-hand corner.



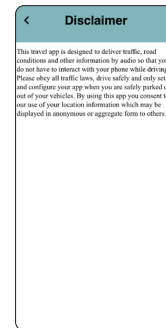
Feedback

» Send feedback via email.



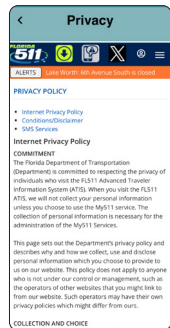
App Tips

» Hints on how to use the app.



Disclaimer

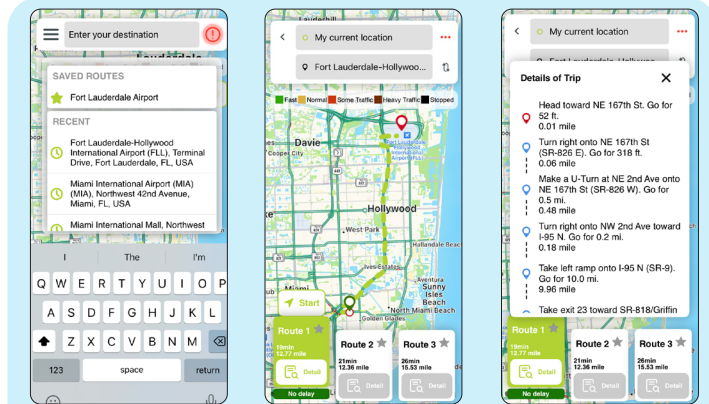
» Show the Disclaimer.



Privacy

» View the privacy policy.

Saved Destinations



Saved or Recent Routes

» Start typing and the app prompts “Saved” or “Recent” routes for easy access.

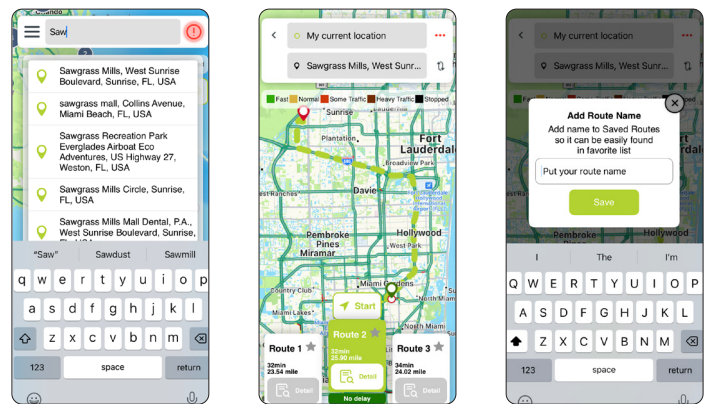
View three Proposed Routes

» Three possible routes are presented.
» Times and distances are also shown.

Details of Trip

» Click on “Detail” for step-by-step directions to your destination.

New Destinations



Enter New Destination

» Enter the destination in the top bar.
» The app prompts a list when typed.

Review New Route

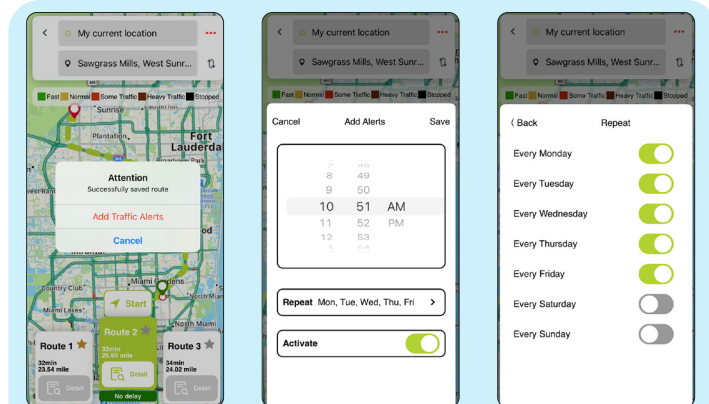
» Three routes are displayed along with times and distances.

Save New Route

» Click on the star next to the Route # to add and save the route.

Traffic Congestion Colors
» The color of the route indicates the congestion level of traffic.

Add Traffic Alerts



Add Traffic Alerts

» Add Traffic Alerts to your route.

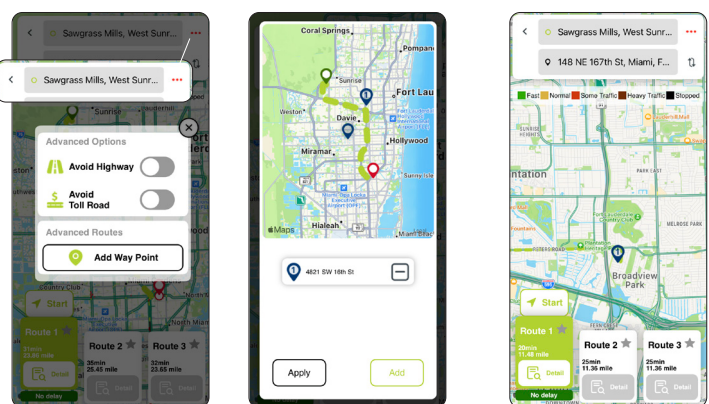
Add Alert Times

» Schedule the time to send alerts.

Select Alert Days

» Select the days to send alerts.

Advanced Options



Avoid Highway/Avoid Toll Road

» Click on the three dots at the top right to select additional options.

Advanced Routes/Add Way Point

» Tap an area to add a way point.
» Hit apply or add another.

Reverse direction

» Select the double arrows to reverse the directions.

